

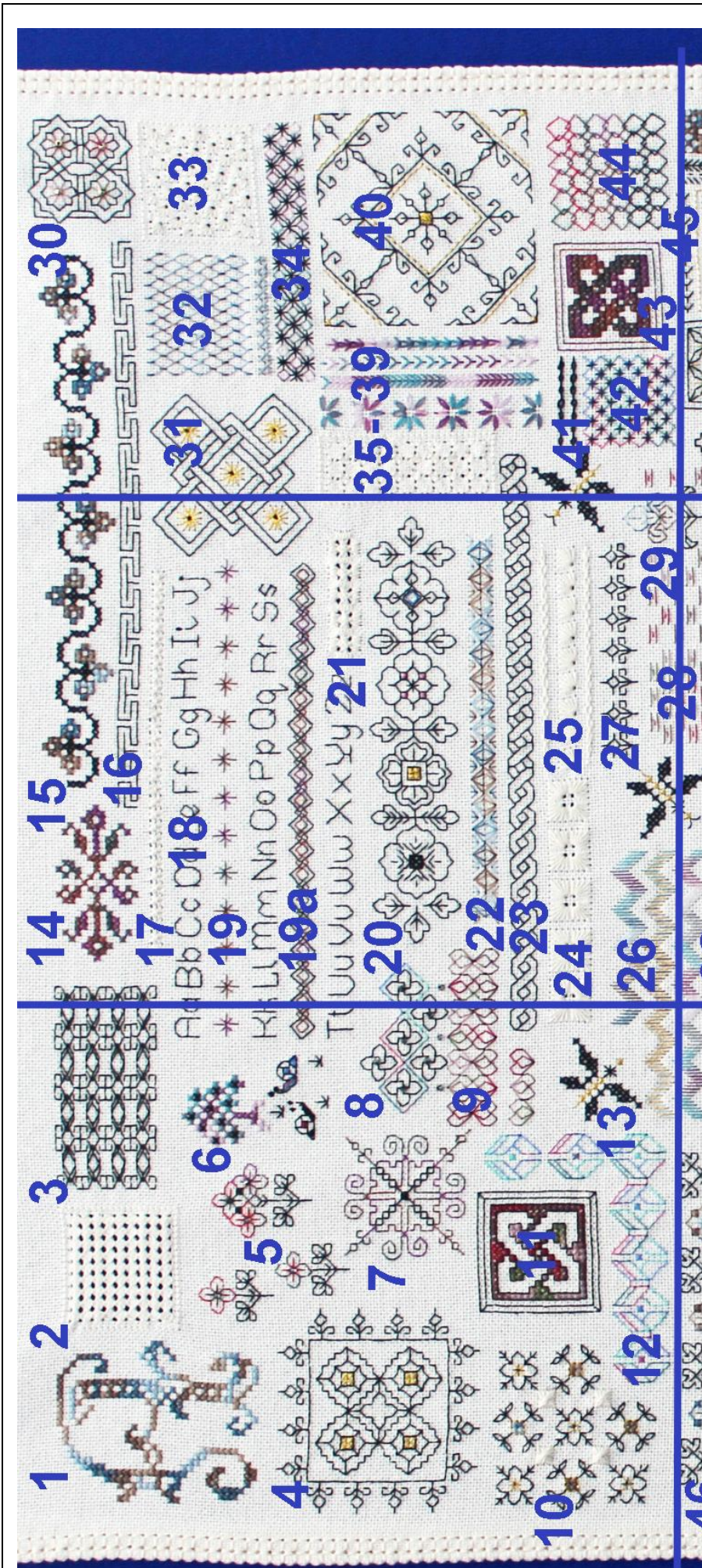
'Sublime Stitches'

Part 2 - Evenweave

Sublime Stitches - Evenweave

Patterns 14 - 29





'Sublime Stitches' Evenweave

Pages 1 - 3 Patterns 1 - 45

To help position the patterns correctly on the fabric and to see how they relate to each other look carefully at the embroidery.

If only a small part of a pattern is shown on one page leave it until the following month and work the pattern as a whole.



DMC Coloris floss, DMC Cotton Pèrle No.12,ecru and Rainbow Gallery Treasure Braid PB01 was used for the evenweave sampler.

'Sublime Stitches' Evenweave Page 2 Patterns 14 - 29

Design Area: 16.07 x 29.57 inches worked on 28 count evenweave

225 x 414 stitches

Material: Minimum size - 26 x 40 inches to allow for embroidery frame and mounting

Suggested fabric:

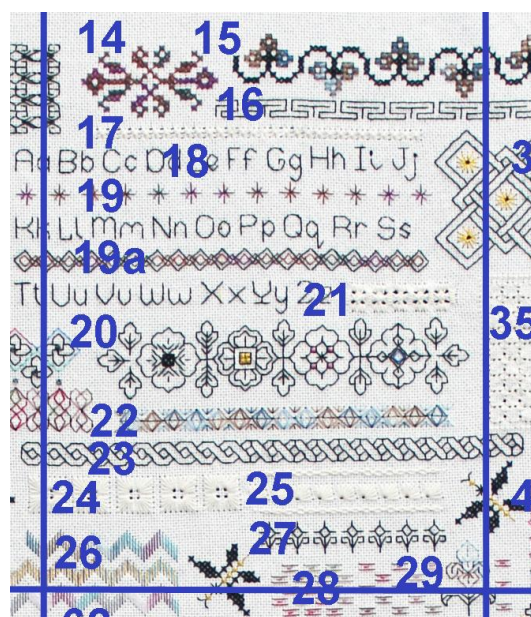
Zweigart 28 count evenweave, white, antique white or cream

Zweigart 25 count Lugana, white or cream

There are 12 pages of patterns. One page will be placed in 'Freebies' in Blackwork Journey every month. Each pattern or group of patterns have their: **Individual numbers, Technique, Threads and beads used, Chart, Picture and Method.**

Each month join a printout of the chart to the one before. The final chart will consist of 12 pages arranged in the order as shown above.

Page 2 The chart will be found at the back of this pdf.



Page 1	Page 2	Page 3
Work across from 1 - 3		
Page 4	Page 5	Page 6
Work across from 4 - 6		
Page 7	Page 8	Page 9
Work across from 7 - 9		
Page 10	Page 11	Page 12
Work across from 10 - 12		

Where patterns overlap between the pages do not start the pattern. The part patterns are there to help in the placing of the design. As additional pages are added the part patterns will be complete.

Do not add beads to the design until all 12 pages have been worked.

Evenweave Sampler Threads:

Legend:

■ [2] DMC-310 ANC-403 DML- black
 ■ [2] DMC-815 ANC-44 DML- garnet - md

■ [2] DMC-996 ANC-433 DML- electric blue - md

Call Outs:

■ [2] DLE-E3852 Dark Gold DMC Light Effects

Backstitch Lines:

— DMC-310 black
 — DMC-815 garnet - md
 — DMC-996 electric blue - md
 — DLE-E3852 Dark Gold

French Knots:

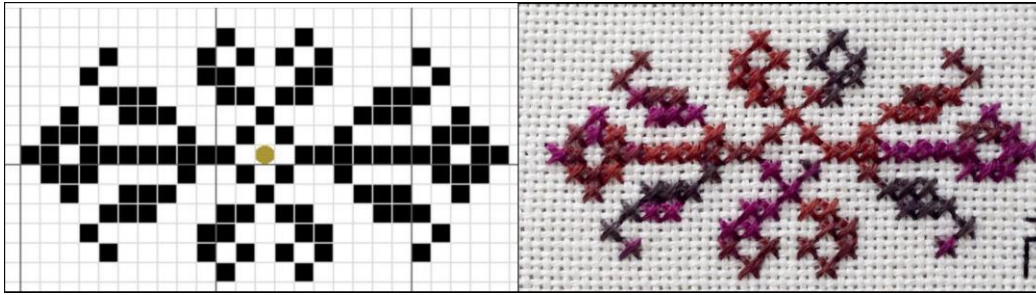
● DMC-310 black ● DMC-815 garnet - md

Beads:

● MHG-557 Mill Hill Glass Beads-Gold

DMC 996 electric blue is used on the chart to show DMC Cotton P rle No.12,ecru

The evenweave sampler was worked in DMC Coloris floss in six shades plus DMC 310 as the base colour. The colors correspond to the 117 Floss colors to coordinate DMC Coloris with DMC Embroidery Floss.



**Page 2 Pattern 14
Hungarian Folk design**

Simple motif designs are used throughout eastern Europe on costumes and household linen.

Leave the tacking lines in when working the embroidery. It will help in placing the patterns.

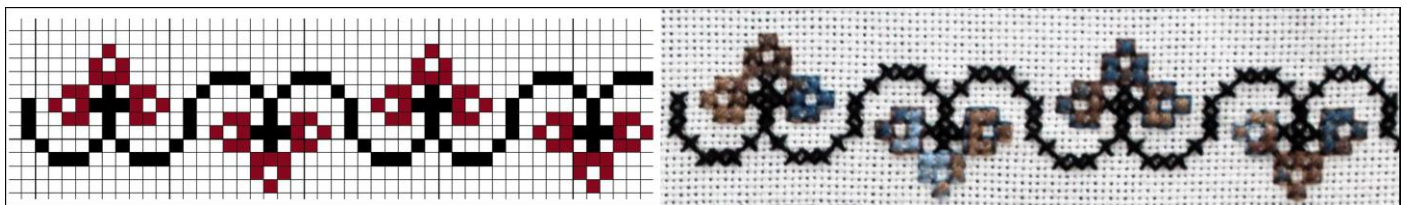
They are frequently worked on red and black. They can be built up into overall patterns or used as borders. (See Pattern 15)

Technique: Cross stitch Threads: Stitch used: Cross stitch, two strands

Pattern 15 Floral band

Technique: Cross stitch Threads:, DMC 310

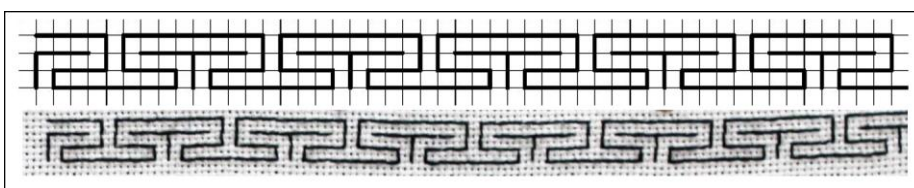
Stitch used: Cross stitch, two strands



Pattern 16 Greek Key

This is a decorative border constructed from a continuous line, shaped into a repeated motif. There are many variations and are found in architecture, mosaics, pottery, jewellery and fabric designs. The example is from the Villa Kerylos on the French Riviera, Italy and a pebble pavement in Rhodes.

Technique: Blackwork Threads DMC 310 Stitches used: Back stitch, one strand

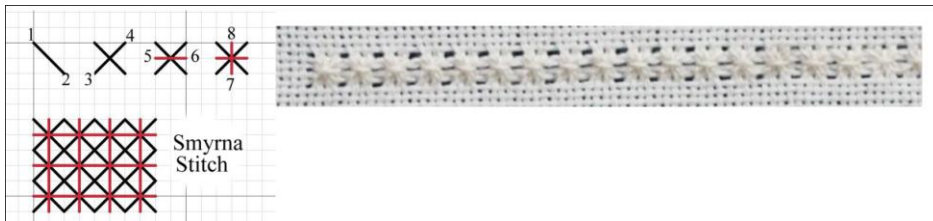


Work the band from left to right.



Pattern 17 Smyrna Stitch

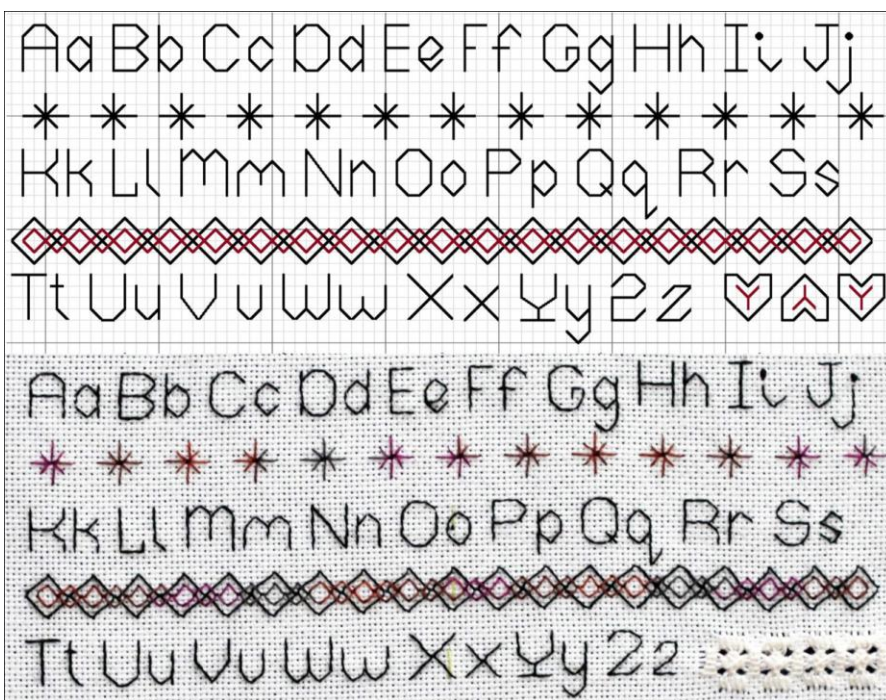
Technique: Pulled thread work Threads: DMC Cotton P rle No.12,ecru Stitch used: Smyrna stitch



Top stitch always faces in the same direction
 Can be worked in rows or as a filler stitch. Pull the stitch tight.

Pattern 18 Alphabet over 2 blocks with decorative bands 19a and 19b (The first letters can be found on Page 1)

Alphabets with capital and lower case letters are always useful additions to the needlewoman's library and can be used for personalising designs. Many traditional samplers are named and dated adding to their interest and value.



Alphabet Technique: Blackwork
 Threads: DMC 310, one strand
 Stitches; Back stitch

Separate the rows of letters with different pattern bands to add variety and interest.

Diamond in Row 19b

The larger diamonds are worked first and then the smaller diamonds overlaid.

Star Stitch worked over 8 threads.

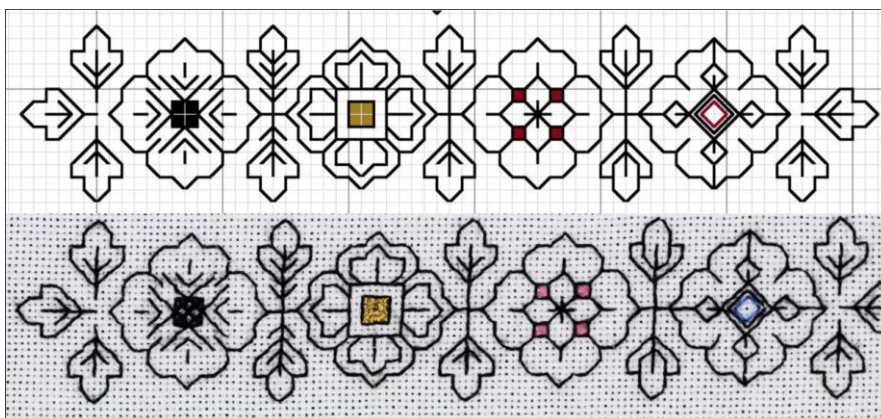
Always lay the final stitch in the same direction.

They can be worked in rows, in isolation or with diamonds in between.



A bead may be added to the centre of the star stitch

The density of the pattern is not achieved by increasing the number of strands of floss but by placing the stitches closer together.



Pattern 20 Flower and Leaf Band.

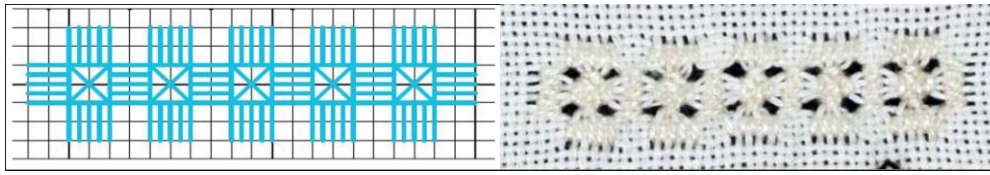
Technique: Blackwork, Cross stitch
 Threads: DMC 310 Stitches; Back stitch, one strand. Cross stitch, two strands.

Learning how to build shapes up into patterns is fundamental in blackwork embroidery. From the two simple shapes a whole series of different flowers and leaves can be created. as a band or as a bouquet. Cross stitch adds depth, gold metallic adds

sparkle. Many more patterns could be developed, just use imagination!

Pattern 21 Mosaic Filling

Technique: Pulled Thread work Threads: DMC Cotton P rle No.12,ecru



This filling stitch is worked over 12 x 12 threads. Work four blocks of satin stitch, each stitch over four threads.. Work a four-sided stitch around the inside

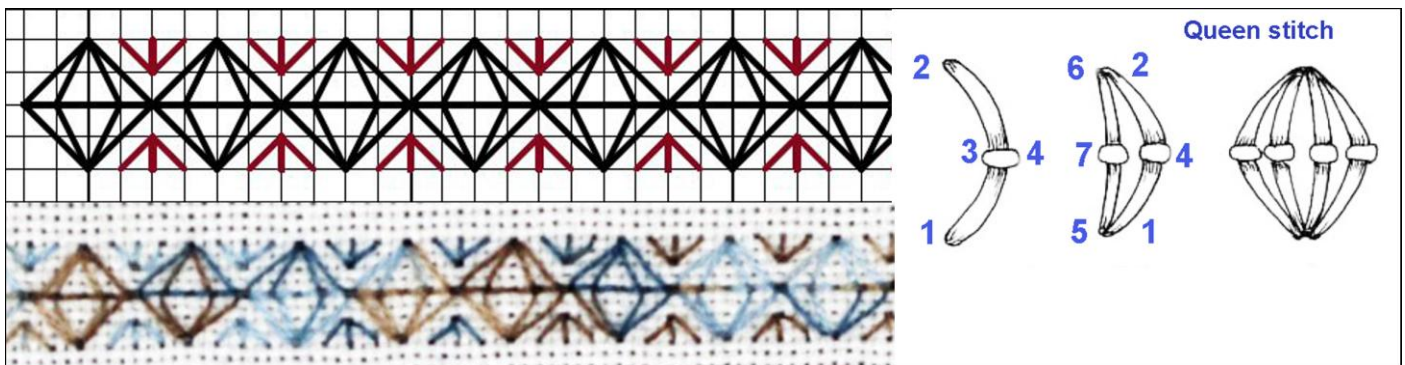
square and then work a cross stitch in the centre

Pattern 22 Queen Stitch

Technique: Embroidery Threads: one strand

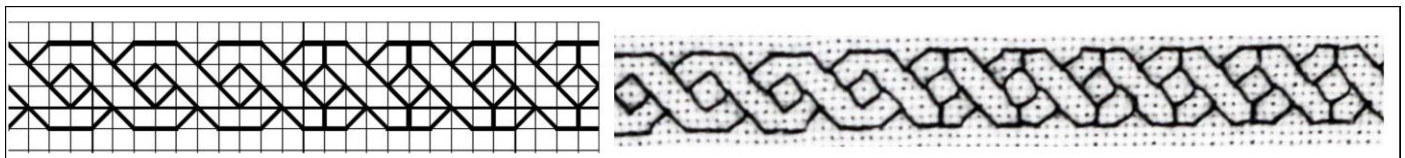
A very useful sampler stitch where four long straight threads are bent and held into place by four smaller threads.

Work the four stitches, anchoring each stitch with a smaller horizontal stitch as shown in the diagram.



Pattern 23 Interlocking Band

Technique: Blackwork Threads: DMC 310 one strand Stitch: Back stitch



Open, simple and effective!

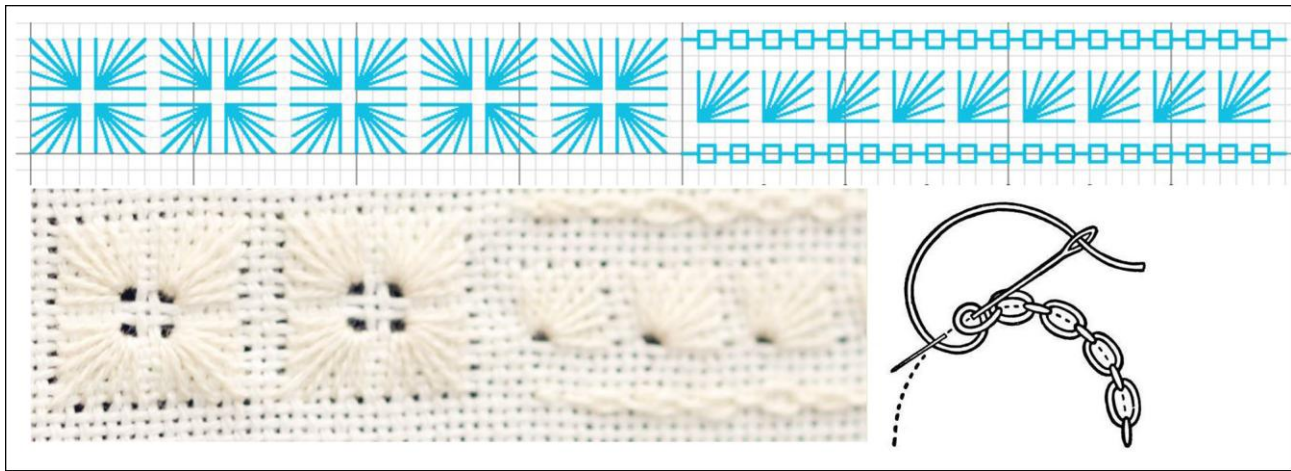
Contrast Pattern 22 with the lighter weight band Pattern 23. A sampler should be full on interest and contrast. All the stitches need to be practised but a sampler is a means of displaying a variety of stitches within a small area. The band is made heavier by adding extra stitches. Adding or removing stitches is how blackwork patterns develop!

Patterns 24 Leaf Stitch and Pattern 25 Leaf Stitch variation with Cable Chain stitch

Technique: Pulled thread work , Embroidery -cable chain band. Thread: DMC Cotton P rle No.12,ecru

Leaf stitch is a very effective pulled thread work stitch. Pattern 25 is a variation on leaf stitch bordered with cable chain band which is an embroidery stitch. Five long stitches make up the 'leaf'. Work from the outside in to the centre.

Work one leaf and then repeat three more times to complete the square. Medium pull to create a set of holes in the centre of each square



Cable chain stitch takes practice. The chains are linked to each other by a cable instead of being directly linked to the next chain.

Follow the diagram or watch Mary Corbet's excellent video on YouTube and work along with her. https://www.youtube.com/watch?v=4v_r-beCyEM

YouTube is a good source of stitch videos , especially those by Mary Corbet of Needle'nThread www.needlethread.com

Pattern 26 Pattern Darning

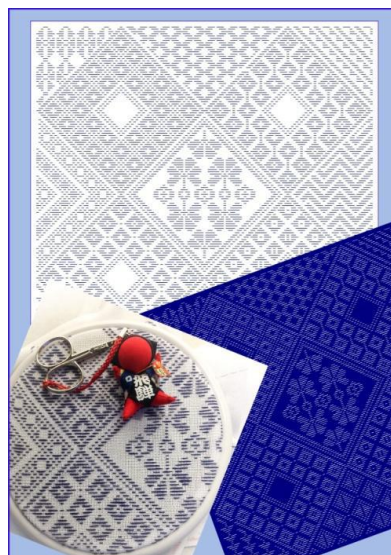
Pattern darning is a simple and ancient embroidery technique in which contrasting thread is woven in-and-out of the ground fabric using rows of running stitches which reverse direction at the end of each row. The length of the stitches may be varied to produce geometric designs.



Traditional embroidery using pattern darning is found in Africa, Japan, Northern and Eastern Europe, the Middle East, Mexico and Peru. Pattern darning is also used as a filling stitch in Blackwork embroidery.

Technique: Pattern darning. Threads one strand Stitches: Long stitch

This pattern starts on Page 1 and is completed here. The butterfly is repeated from Page 1.



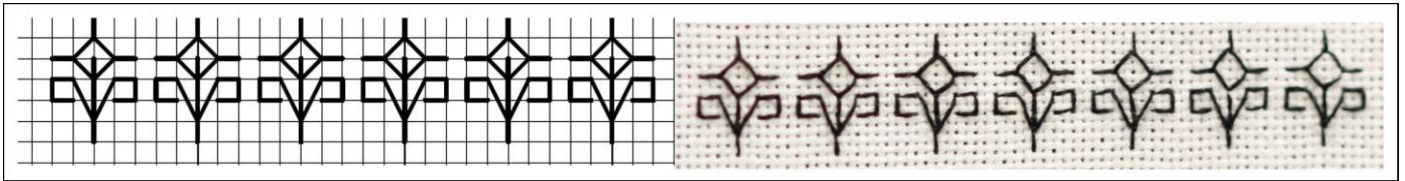
On evenweave fabric there would be one thread between each stitch. Pull gently as this is an embroidery stitch.

CH0340 Sumiko Japanese Kogin pattern darning can be found in 'Charts' in Blackwork Journey

Pattern 27 Simple Stitches

Technique Blackwork: Threads: DMC 310, one strand Stitch: Back stitch

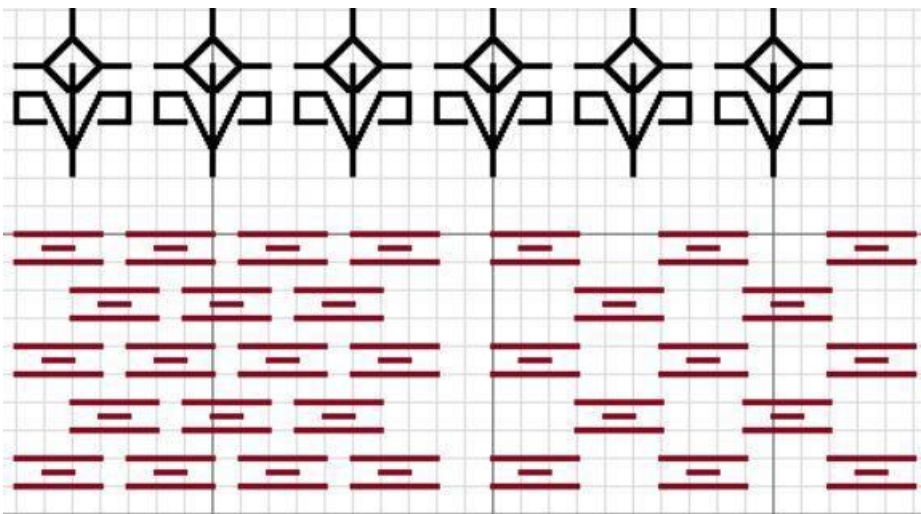
Building up patterns from simple motifs starts here. There are many variations in this sampler.



Pattern 28 Pattern Darning Japanese style

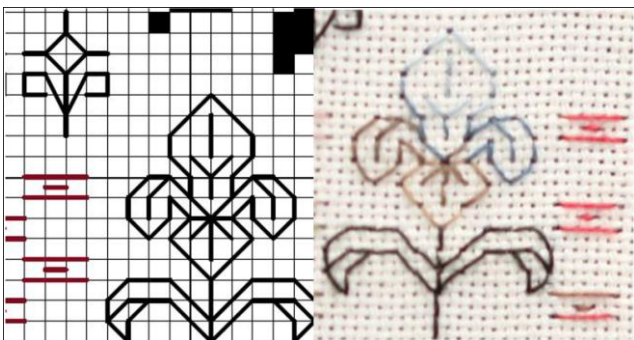
Technique: Pattern darning. Threads: one strand Stitch: Back stitch

This is worked over six threads with a smaller stitch in the centre of each pair.



Pattern 29 Iris Flowers

Blackwork was traditionally used as decoration on caps, collars and cuffs and frequently depicted small floral motifs in the repeat design. Iris Flowers follows on that tradition of floral embroidery.



Technique: Blackwork Threads: one strand Stitches: Back stitch

Queen Elizabeth I with a Fan, 1585-1590.

Artist Unknown.

© The Royal Collection.

Freestyle floral blackwork displayed in Queen Elizabeth's gown.



This completes Page 2.

Sublime Stitches Evenweave

